

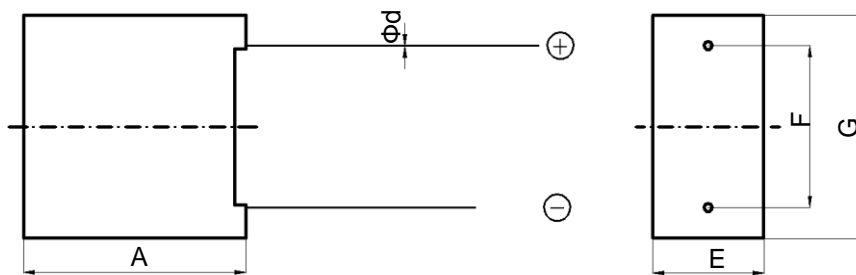
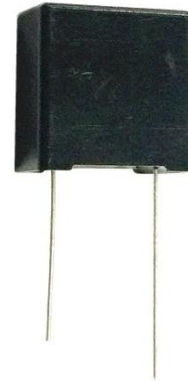
Features

- High power performance
- Low ESR
- Over 500,000 duty cycles
- Lead terminal

Applications

- Hybrid battery packs
- Pulse power
- Bridge or hold-up power
- Valve and solenoid actuation

Dimensions



Part Number	Dimension (mm)				
	A±1	d±0.05	F±1	E±1	G±1
MCF0000C5-0005R5LTZ	18.0	0.6	12.0	9.6	18.0
MCF0001C0-0005R5LTZ	18.0	0.6	12.0	9.6	18.0
MCF0001C5-0005R5LTZ	26.0	0.5	12.0	9.6	18.0

Specifications

Items	Characteristics
Operating Voltage	5.5 VDC
Surge Voltage	5.8 VDC
Operating Temperature Range	-40°C to 65°C
Capacitance Tolerance	-10% to +40% (25°C)
Temperature Performance(-40°C to 65°C)	$\Delta C \leq 30\%$ of initial measured value @ 25°C ESR $\leq 200\%$ of specified value
Life (1000 hours @ 65°C, 5.5 VDC)	$\Delta C \leq 30\%$ of initial measured value ESR $\leq 200\%$ of specified value
Cycle life (500,000 cycles between V_R and $1/2 V_R$)	$\Delta C \leq 30\%$ of initial measured value ESR $\leq 200\%$ of specified value

Standard Product

CAP (F)	Part Number	ESR (mΩ)		LC (mA, RT 72hrs)	Max. Energy Stored (Wh)	Max. Energy Density (Wh/Kg)	Max. Continuous Current (15/40°C,A)	Max. Peak Current (A)	Typical Thermal Resistance (Housing) °C/W	Typical Thermal Capacitance, C_{th} , J/°C	Typical Mass (g)
		AC @ 1kHz	DC								
0.5	MCF0000C5-0005R5LTZ	500	750	0.005	0.002	0.47	0.4/0.6	1.0	132	4.3	4.5
1	MCF0001C0-0005R5LTZ	400	600	0.010	0.004	0.93	0.5/0.8	1.7	109	4.7	5.0
1.5	MCF0001C5-0005R5LTZ	350	525	0.015	0.006	0.96	0.7/1.1	2.3	65	6.1	6.5