

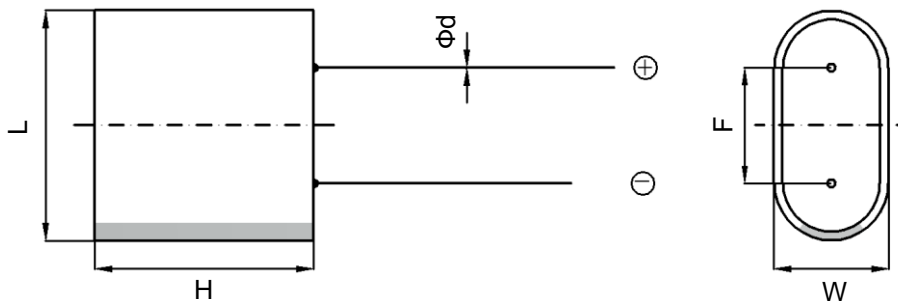
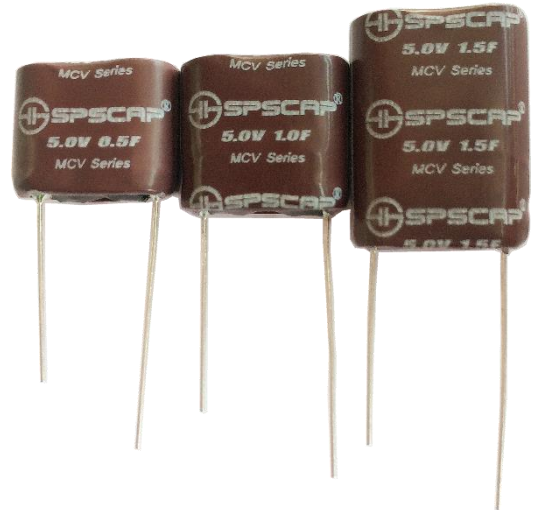
Features

- High power performance
- Low ESR
- Over 500,000 duty cycles
- Lead terminal

Applications

- Hybrid battery packs
- Pulse power
- Bridge or hold-up power
- Valve and solenoid actuation

Dimensions



Part Number	Dimension (mm)				
	L±1	W±1	H±1	F±1	d±0.05
MCV0000C5-0005R0LTP	16.5	8	12.5	5	0.5
MCV0001C0-0005R0LTP	16.5	8	15	5	0.5
MCV0001C5-0005R0LTP	16.5	8	22.5	5	0.5
MCV0000C5-0005R0LTN	16.5	8	12.5	12	0.5
MCV0001C0-0005R0LTN	16.5	8	15	12	0.5
MCV0001C5-0005R0LTN	16.5	8	22.5	12	0.5

Specifications

Items	Characteristics
Operating Voltage	5 VDC
Surge Voltage	5.5 VDC
Operating Temperature Range	-25°C to 70°C
Capacitance Tolerance	-10% to +40% (25°C)
Temperature Performance(-25°C to 70°C)	$\Delta C \leq 30\%$ of initial measured value@ 25°C ESR $\leq 200\%$ of specified value
Life (1000 hours @ 70°C, 5 VDC)	$\Delta C \leq 30\%$ of initial measured value ESR $\leq 200\%$ of specified value
Cycle life (500,000 cycles between V_R and $1/2 V_R$)	$\Delta C \leq 30\%$ of initial measured value ESR $\leq 200\%$ of specified value

Standard Product

CAP (F)	Part Number	ESR (mΩ)		LC (mA, RT 72hrs)	Max. Energy Stored (Wh)	Max. Energy Density (Wh/Kg)	Max. Continuous Current (15/40°C,A)	Max. Peak Current (A)	Typical Thermal Resistance (Housing) °C/W	Typical Thermal Capacitance, C_{th} , J/°C	Typical Mass (g)
		AC @ 1kHz	DC								
0.5	MCV0000C5-0005R0LTP	900	1350	0.008	0.002	0.80	0.3/0.5	0.7	138	2.1	2.5
1	MCV0001C0-0005R0LTP	500	750	0.010	0.004	1.33	0.4/0.6	1.4	128	2.6	3.0
1.5	MCV0001C5-0005R0LTP	350	525	0.015	0.005	1.32	0.6/1.0	2.1	77	3.2	3.8
0.5	MCV0000C5-0005R0LTN	900	1350	0.008	0.002	0.80	0.3/0.5	0.7	138	2.1	2.5
1	MCV0001C0-0005R0LTN	500	750	0.010	0.004	1.33	0.4/0.6	1.4	128	2.6	3.0
1.5	MCV0001C5-0005R0LTN	350	525	0.015	0.005	1.32	0.6/1.0	2.1	77	3.2	3.8